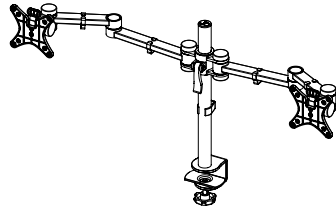
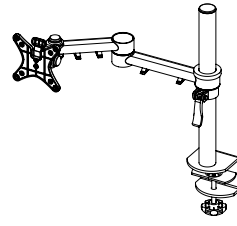


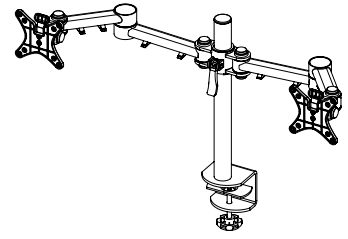
Vision S - single



Vision S - double



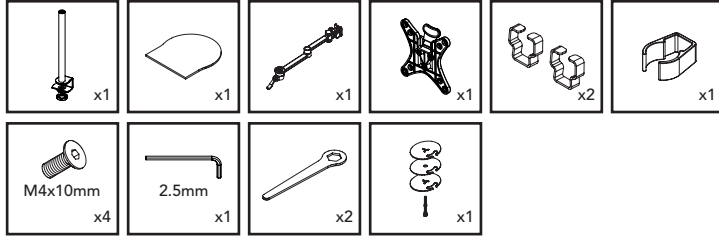
Vision HD - single



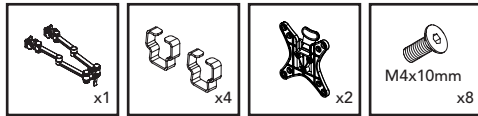
Vision HD - double

Contents

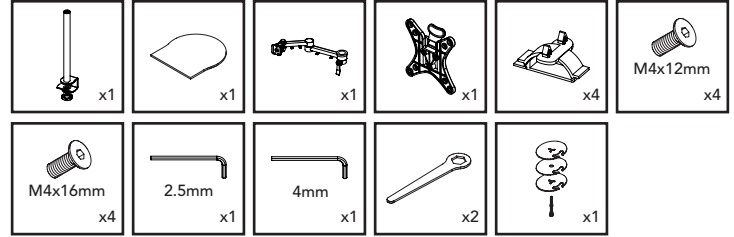
Vision S - single



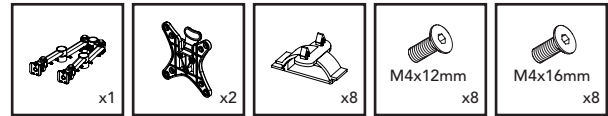
Vision S - double (same as single but with variations below)



Vision HD - single

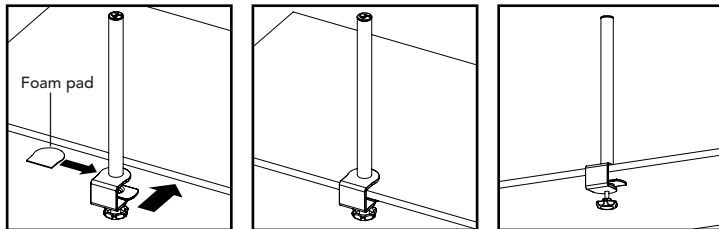


Vision HD - double (same as single but with variations below)



Mounting the pole to the desk

C-clamp fixing (supplied fitted to pole)

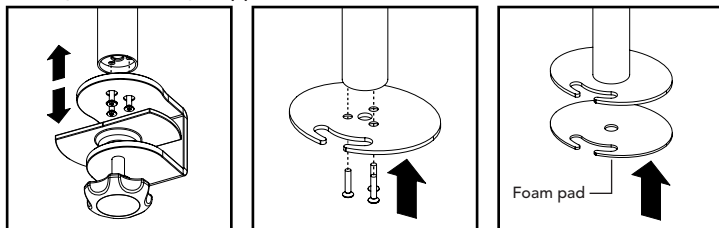


Attach the supplied foam pad to the clamp to protect the desk surface.

Position the clamp on the edge of the desk as shown.

Turn the hand screw clockwise to secure the clamp to the desk.

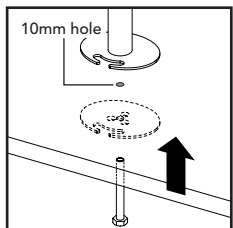
Through desk fixing (supplied in the box)



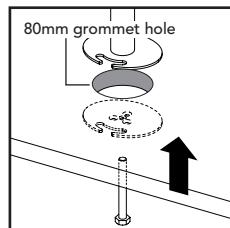
Remove the attached C-clamp from the pole by removing the 3x hex socket screws.

Attach a plate from the through desk fixing to the pole with the 3x hex socket screws.

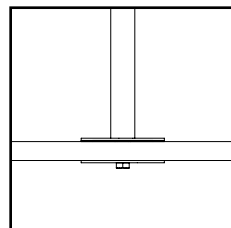
Add the foam pad from the through desk fixing to the bottom of the attached plate.



Place the pole above the fixing hole and secure with fixing bolt and remaining plate.

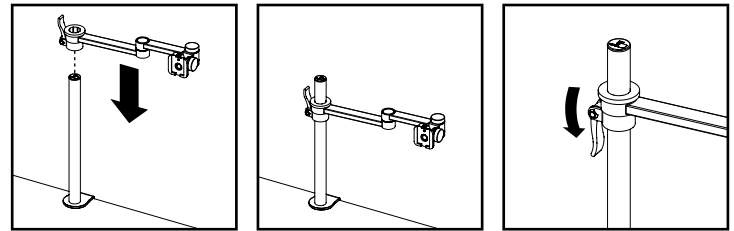


Place the pole above the fixing hole and secure with fixing bolt and remaining plate.



The pole is now secured in place with a plate above and below the desk as shown.

Installing the monitor arm/arms

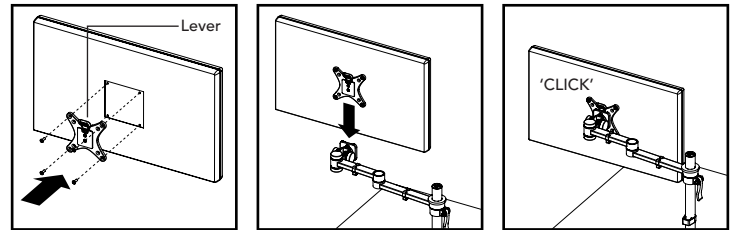


Lift the locking lever and lower the arm onto the pole.

Set the arm at the desired height. The arm can be further adjusted later.

Secure the arm in position by fully lowering the locking lever.

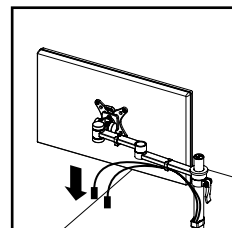
Installing and removing a monitor



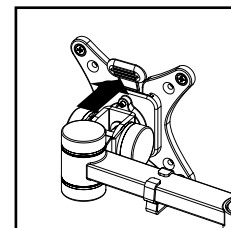
Offer up the quick release VESA to the monitor, ensure the lever is at the top.

Fix in place with supplied fixings. 4x M4x10mm CSK hex socket screws.

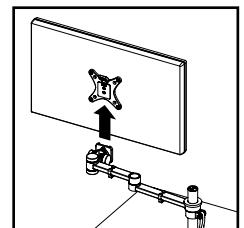
Align the raised square section on the VESA with the recess on the head mount.



To remove the monitors, start by disconnecting any cables.



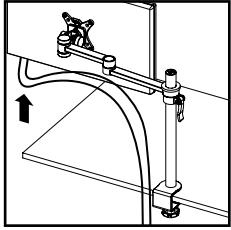
Depress the lever at the top of the VESA to release it from the rail mount.



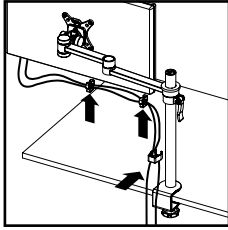
Carefully lift the monitor up and away from the arm.

Cable management

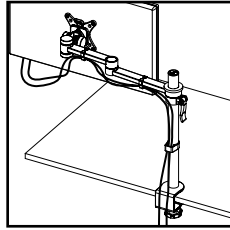
Vision S



Insert the desired cables into the monitor/s.

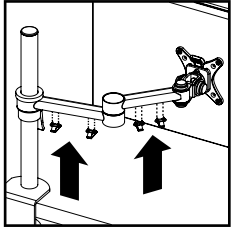


Attach the cable clips onto the cables then snap the clips onto the arm and pole.

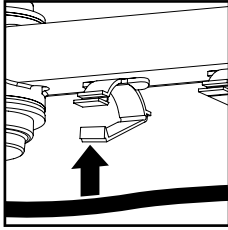


Ensure there is enough slack in the cables to allow movement of the arm without tension.

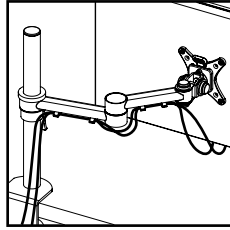
Vision HD



Align the barbs on the cable clips with the holes on the arm and firmly press in place.

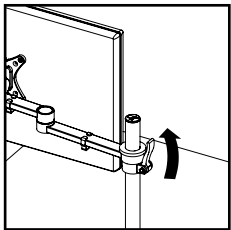


Flex open each cable clip and insert the cables.

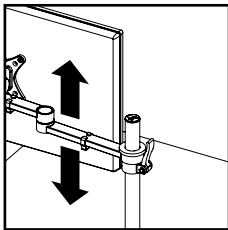


Continue the process until the cables are routed neatly from the monitor/s.

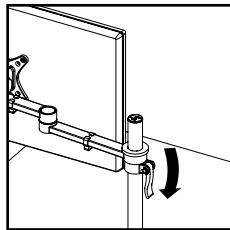
Arm height adjustment (applies to all arms)



Support the weight of the arm and monitor and release the locking lever.



Reposition the arm to the desired height while supporting the weight of the monitor.



Once at the desired height, secure in place with the locking lever.

Additional information

Safety

- Installation is to be carried out in accordance with relevant Health & Safety regulations and only to be carried out by a skilled or competent person.
- The product should be installed to comply with the relevant national standards and be inspected and tested prior to being put into service (in the UK BS 7671 Wiring Regulations or BS 6396 Office and Educational Systems Best Practice).
- Isolate the supply before installation or repositioning. Any locking mechanisms must be used and fully engaged.
- Fix the clamp of the monitor arm to a suitable solid worksurface that is capable of supporting the arm and maximum loading of 6kg per arm (Vision S) or 10kg per arm (Vision HD).
- Product to be used only for the intended purpose of supporting certain display equipment in an office environment.
- Do not misuse, dismantle or re-configure the product because doing so will invalidate the warranty.

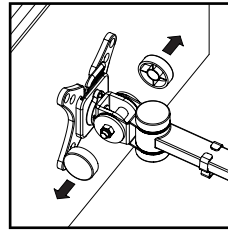
Standards

- Refer to the Declaration of Conformity.

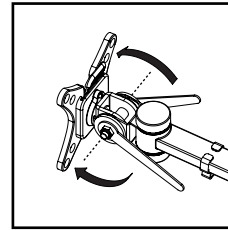
Product care

- Clean using a dry cloth. No abrasives or solvents to be used on the product.
- Do not drop or expose to moisture.

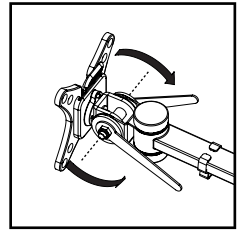
Weight adjustment



Remove the caps from the head adjustment nuts and replace after making adjustments.



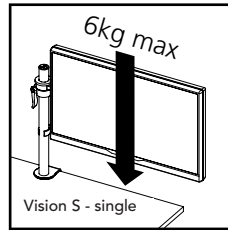
Turn the adjustment nuts clockwise for heavier monitors with supplied tools.



Turn the adjustment nuts anti-clockwise for lighter monitors.

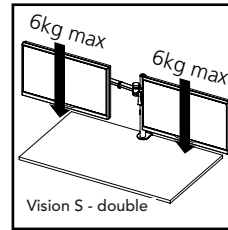
Supported load

Vision S



Vision S - single

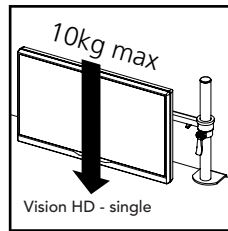
The Vision S single supports a max. load of 6kg.



Vision S - double

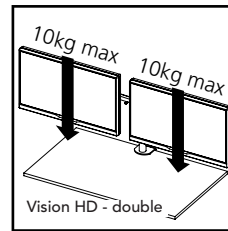
The Vision S double supports a max. load of 6kg per monitor.

Vision HD



Vision HD - single

The Vision HD single supports a max. load of 10kg.



Vision HD - double

The Vision HD double supports a max. load of 10kg per monitor.

