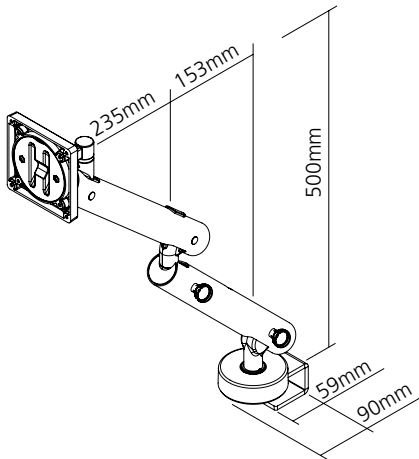
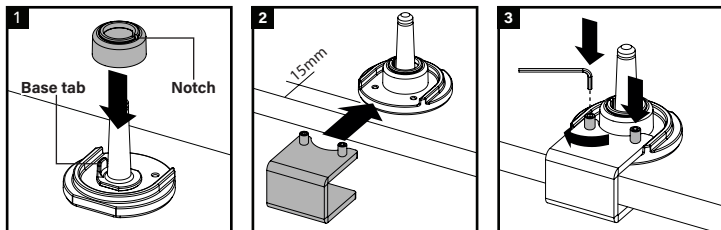


Dimensions

Designed to fit onto desks with 16-27mm thickness with the included clamp.



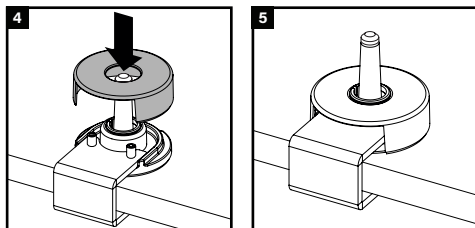
Mounting the base to the desk



1 If not already in place, fit the 180° - stop ring with the notch opposite the base tab.

2 Place the base near the edge of the desk and offer up the C-clamp as shown.

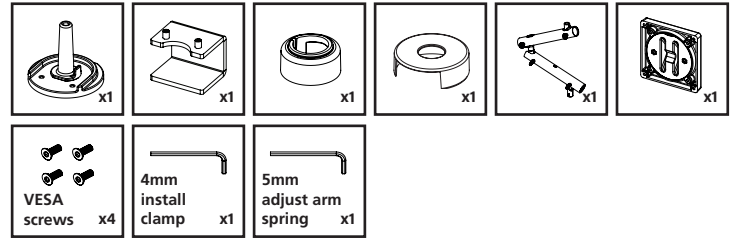
3 Ensure 2x clamp screws locate in holes in the base and tighten fully. Tighten both evenly.



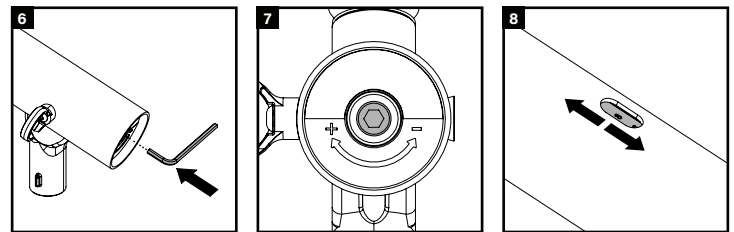
4 Place the clamp cover over the base with the cut-out facing the desk edge.

5 The base is now secured in place and ready for the arm to be installed.

Contents



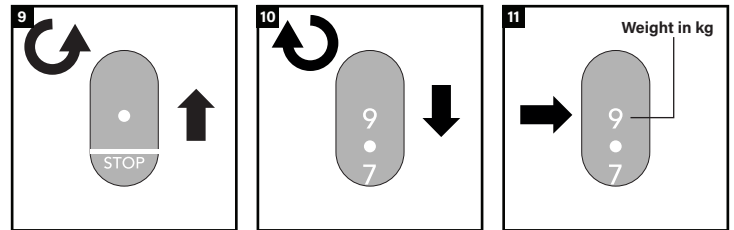
Pre-tensioning the arm (if monitor weight is known)



6 Use the 5mm Allen key to turn the adjuster at the base of the lower arm as shown.

7 Arrow shows direction to turn the adjuster. '+' for heavier monitors. '-' for lighter monitors.

8 The window on the lower arm indicates the monitor weight setting, from 2-9 kg.

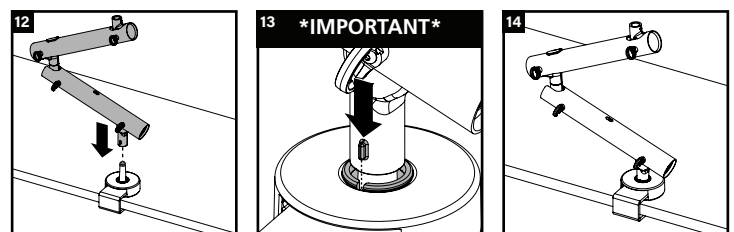


9 Turn the adjuster anti-clockwise to suit lower weight monitors. Do not adjust past 'STOP'.

10 Turn the adjuster clockwise to suit heavier monitors upto a max. weight of 9kg.

11 Ensure to align the desired weight setting centrally in the window.

Installing the arm

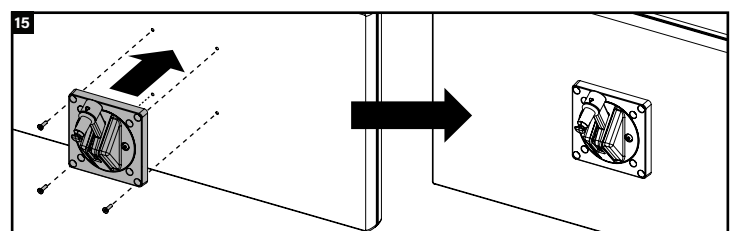


12 Lower the arm onto the installed base on the desk.

13 ***IMPORTANT*** Guide the lug on the side of the arm into the slot on the 180°- stop ring as shown.

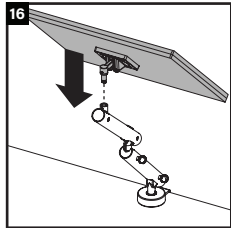
14 The arm is now secured in place and ready for the head and monitor to be installed.

Installing the head onto the monitor

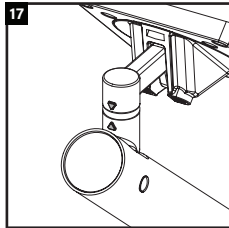


15 Align the VESA holes on the head with those on the monitor, either 75mm or 100mm spacing. Fix in place with the supplied fixing screws. The monitor is now ready to install onto the arm.

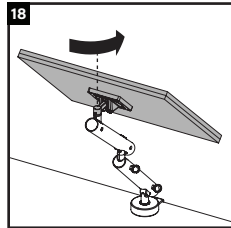
Installing the head (with monitor)



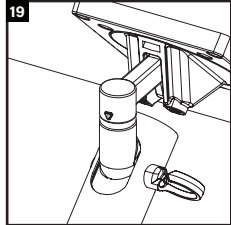
Holding the monitor securely with both hands, offer it to the arm as shown.



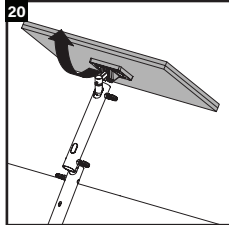
Insert the head spigot into the arm ensuring that the arrows are aligned as shown.



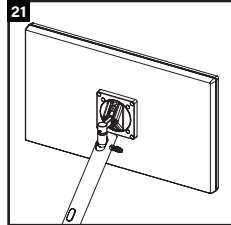
Rotate the monitor and head to lock it onto the arm.



When the arrows are no longer aligned, the monitor is securely locked to the arm.



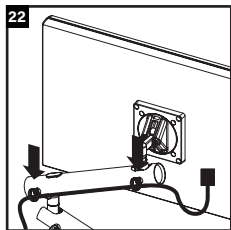
Tilt the monitor to the desired viewing angle now that it is installed.



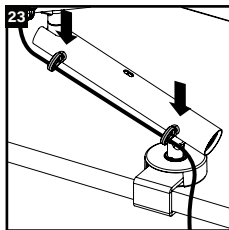
The monitor and head are now secured in place and ready for cables to be installed.

Reverse steps to remove the monitor - align arrows on the head first

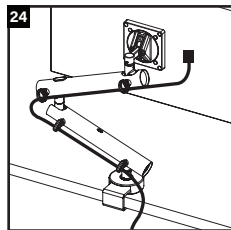
Cable management



Connect the necessary cables to the monitor. Flex the cables inside the integral cable clips.



Feed the cables down the arm and flex into the remaining cable clips as shown.

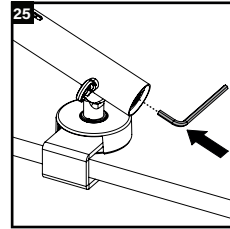


Use appropriate cable management when connecting to your power and data source.

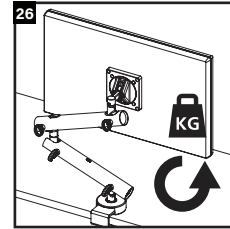
Ensure cables will not be under strain when the arm is fully extended

Additional arm adjustment

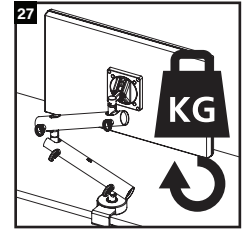
The spring tension will need to be adjusted to suit the weight of the monitor and ensure the arm is balanced correctly. Refer to sections 7-9 'Pre-tensioning the arm' for guidance.



If the installed monitor sags or rises on the arm, the spring tension can be further adjusted.

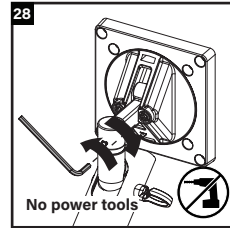


Turn the adjuster anti-clockwise to suit lower weight monitors.

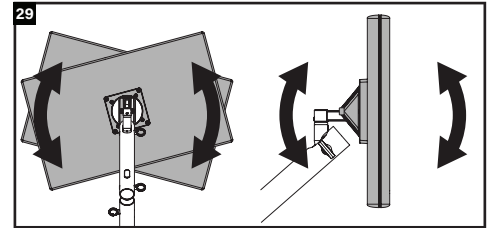


Turn the adjuster clockwise to suit heavier monitors upto a max. weight of 9kg.

Additional monitor adjustment

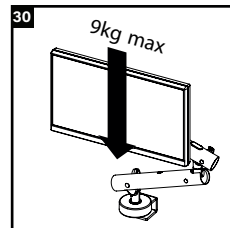


Adjust monitor tilt resistance by evenly loosening or tightening 2x adjuster screws.

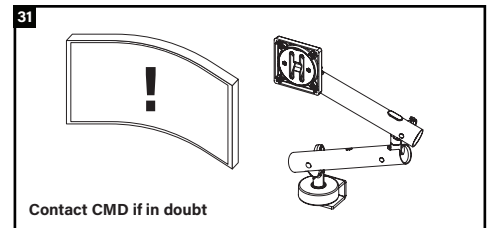


The monitor can be rotated portrait-to-landscape and can be tilted forwards and backwards. The 2x adjuster screws permit friction to be adjusted to get correct balance of support and movement.

Supported load



The load range for this monitor arm is from 2kg to a maximum of 9kg (flat monitors).



Mounting of curved monitors can exert a greater force on the arm's tilt mechanism. If mounting a curved monitor, it is highly recommended to perform a test install to ensure correct support.

Additional information

Safety

- Fix the clamp of the monitor arm to a suitable solid worksurface that is capable of supporting the arm and maximum loading of 9kg.
- Product to be used only for the intended purpose of supporting certain display equipment in an office environment.
- Installation is to be carried out in accordance with relevant Health & Safety regulations and only to be carried out by a skilled or competent person.
- The installation should be installed to comply with the relevant national standards and be inspected and tested prior to being put into service (in the UK BS 7671 Wiring Regulations or BS 6396 Office and Educational Systems Best Practice).
- If mounting a curved monitor, it is highly recommended to perform a test install to ensure it will be supported correctly, as curved monitors can exert a greater force on the arm's tilt mechanism. If in doubt, contact CMD to discuss.
- Do not misuse, dismantle or re-configure the product because doing so will invalidate the warranty.

Standards

- Refer to the Declaration of Conformity.

Product care

- Clean using a dry cloth. No abrasives or solvents to be used on the product.
- Do not drop or expose to moisture.



Scan the QR code to view an installation video

